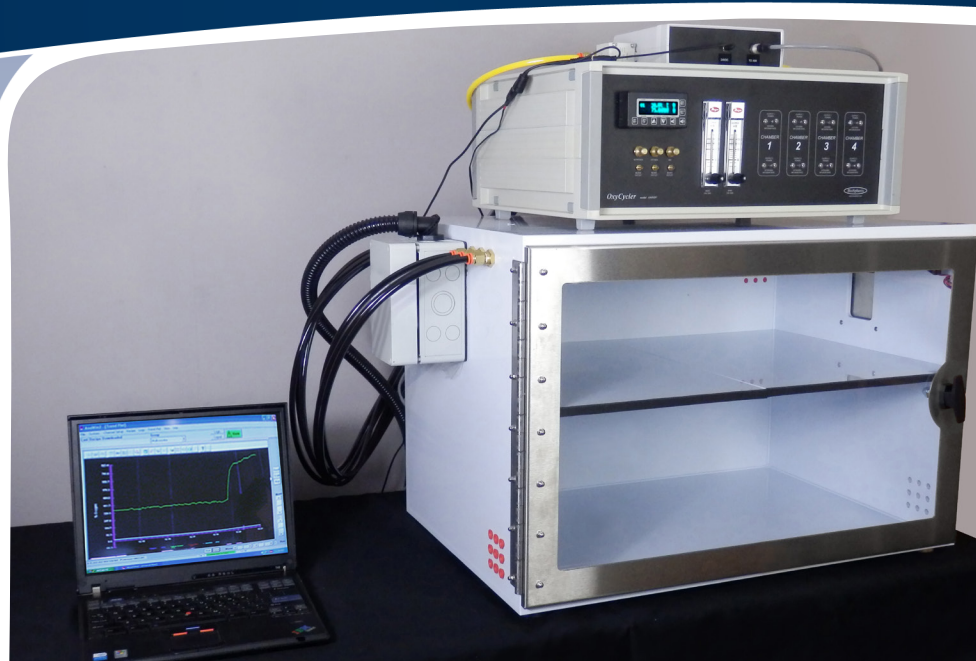


- Maximize O₂ profiling speed
- Fits existing OxyCycler A84 & A41 Series
- Muffles gas infusion for noise reduction
- Add 1 - 4 Quick & Quiet chambers



1-4 Chamber Quick Dynamic 0.1-99.9% O₂

UPGRADE A POWERFUL TOOL

For use as an accessory with either the OxyCycler A84 or A41 System for scientists who do oxygen sensitive work. Operating off the functions of the OxyCycler controller, the Quick & Quiet simply allows for quicker profiling of a particular chamber protocol.

FULL RANGE DYNAMIC PROFILES

Control oxygen profiles with multiple setpoints from 0.1-99.9% oxygen.

UNIQUE CHAMBER FEATURES

Works with uniquely designed BioSpherix A-Chambers to maximize gas infusion for quick changes between setpoints. Muffles lower dBA of infusion to decrease effects on animal behavior, thus reducing variability in the experiment.

MULTI-CHAMBER IS PRODUCTIVE

Each accessory unit controls one chamber but up to four units can be added to an A84XOV. Operate chambers simultaneously or independently of the others. Control different profiles or the same profile.

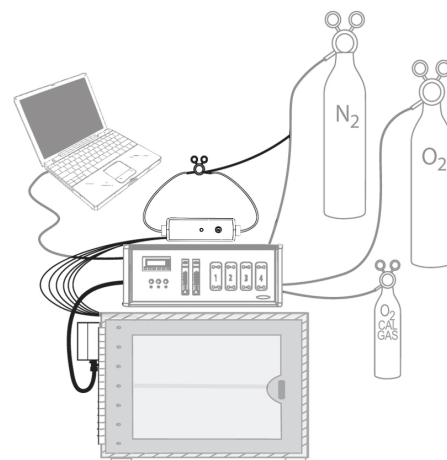
CONTROL IS EFFICIENT

Nitrogen lowers the oxygen while oxygen raises it. The oxygen sensor inside chamber tells the OxyCycler controller exactly when and how much gas to infuse for maximum gas efficiency.

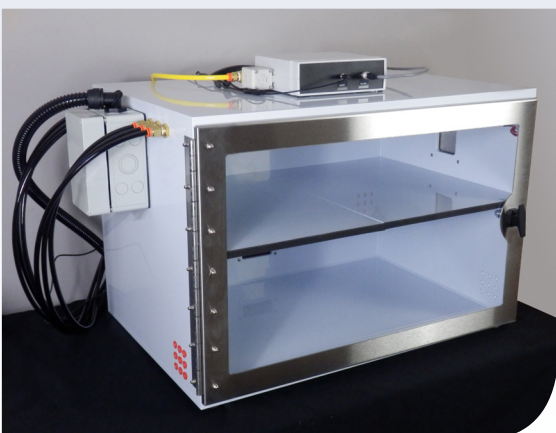
OPERATION IS SIMPLE

Once installed and configured, all operation, data-logging, calibration, etc. is performed through the PC interface software provided with the OxyCycler System. Occasionally check calibration and supply gas, otherwise it's all automatic!

Installation Schematic

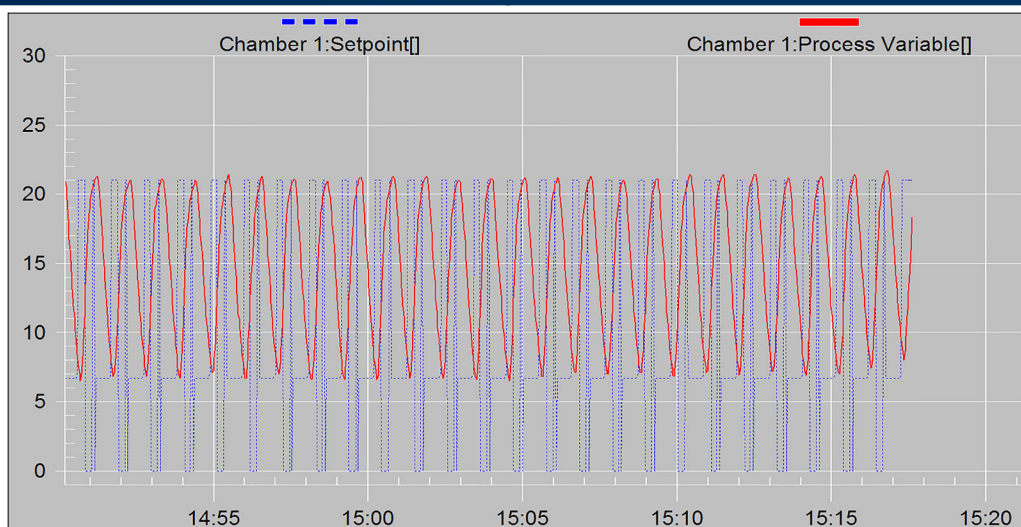


1. Set Quick and Quiet controller on or near host chamber and plug it in.
2. Connect electrical umbilical to the accessory port on the back panel of the OxyCycler controller.
3. Mount actuator pod to host chamber.
4. Connect infusion tubing and hook up gas supply.



Attach the Quick & Quiet Accessory Kit and specifically designed A-Chamber to OxyCycler A84 or A41 to add an additional chamber(s) with increased O₂ profiling capabilities.

Performance

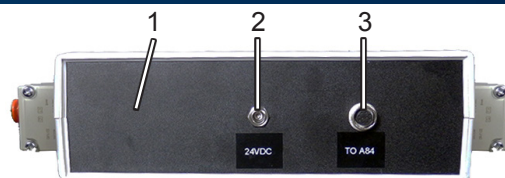


This profile demonstrates continuous cycles (1 minute each) 20.7% to 7% to 20.7%.

Specs

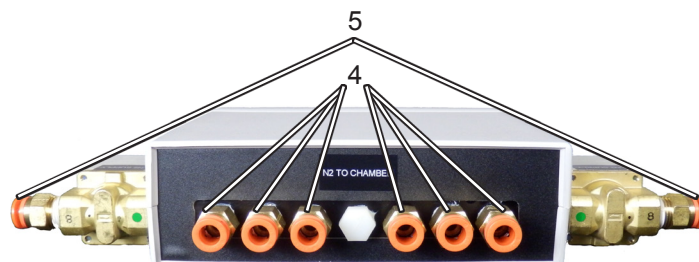
ELECTRICAL POWER: 24 VDC @ 1.67A
CONTROL RANGE: 0.1-99.9% oxygen
ACCURACY: ±1%
RESOLUTION: 0.1%
GAS SOURCE: Compressed gas tanks, liquid carboys (from headspace), or generators.
GAS SUPPLY: Pressurized N2
GAS SUPPLY LINE: 1/4 inch I.D. hose pressure rated at 40 PSIG.
GAS SUPPLY LINE PRESSURE: 0-15 PSIG
GAS INFUSION RATE: 900 S.C.F.H. control gas each chamber.
GAS SUPPLY HOSE FITTINGS: 1/4 inch hose barb.
UMBILICAL LENGTH: 12 feet (custom lengths available).
ACTUATOR POD SIZE: 7"H, 4.375"W, 4.5"D
WEIGHT: 5 lbs. (Controller Only)
DIMENSIONS: 2.625"H x 13.125"W x 8"D

Front Panel



- 1. Controller:** Contains all input output valves to diffuse the gas source to the chamber.
- 2. Power Receptacle:** Inlet jack for the 24VDC regulated power supply and 12VDC fan power supply.
- 3. A84 Input:** Receptacle for the supplied 12' Electrical Umbilical extending from the accessory port on the back panel of the A84.

Back Panel



- 4. Manifold Outputs:** Diffuses the supply gas through tubing to the infusion ports on the chamber.
- 5. Gas Supply Input Valves:** Input for 1/4 inch I.D. hose supply gas tubings.



cyto-centric
cell incubation and processing
systems

Toll Free 800.441.3414
www.biospherix.com
25 Union Street, Parish, NY 13131
Ph: 315.387.3414 Fax: 315.387.3415 E-mail: sales@biospherix.com